

DISPATCH RECAP SHEET

DATE: 4.18.26

DAY SAT

SHIFT: DAY

NIGHT

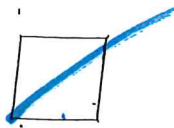
MCA: 131 / 126

MCA SUNDAY 4.18.26

141 / 136

30% BOARD

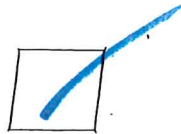
CLEARED BOARD



LAST JOB LEFT OFF ON _____ HOURS

KEY BOARD

CLEARED BOARD

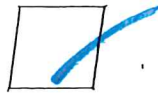


LAST JOB LEFT OFF ON _____ HOURS

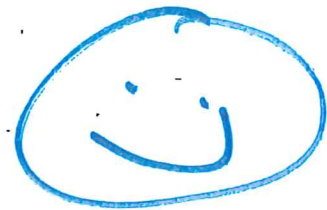
No
30's

BASIC BOARD

CLEARED BOARD



LAST JOB LEFT OFF ON _____ HOURS



STEADY BOARD

CLEARED BOARD



LAST JOB LEFT OFF ON _____ HOURS

BS REMAINING AFTER DISPATCH= 2

Local 63 Dispatch for 18-Apr-2026 Day

SC Average Hours = 144 Key Average Hours = 123

SEQ	Reg#	Name	Shift	Board	Hours	Job#	Availability
1	37272	MITRE,CARMEN	1	2 SC	77	108	
2	37544	CARBONE,JO ANN	1	2 SC	100	S/S/M	
3	130263	BROWN,STUART	1	2 SC	114	101	
4	36383	UPSHAW,TAMMI	1	2 SC	116	SAT	
5	37801	MAIN,CARLOTTA	1	2 SC	129	110	
6	37626	RODRIGUEZ,GLORIA	1	2 SC	140	111	
7	40958	SWEENEY, BRIANNA	1	2 SC	142	SAT/SUN	
8	131188	IACONO,JOHN	1	2 SC	152	106	
9	37975	MAI,THOMAS	1	2 SC	163	109	
10	37408	HODGE,LINDA	1	2 SC	165	107	
11	38102	HOSKING,ANTHONY	1	2 SC	173	SAT	
12	37358	HYSAW,REBECCA	1	2 SC	202	SAT	
13	40859	GASPEROV,JOE	1	2 SC	204	FLOP	
1	37801	MAIN,CARLOTTA	1	3 Key	0	SC	
2	37358	HYSAW,REBECCA	1	3 Key	0	SAT	
3	37272	MITRE,CARMEN	1	3 Key	0	SC	
4	37975	MAI,THOMAS	1	3 Key	0	SC	
5	130263	BROWN,STUART	1	3 Key	0	SC	
6	40958	SWEENEY, BRIANNA	1	3 Key	10	SAT/SUN	
7	38102	HOSKING,ANTHONY	1	3 Key	10	SAT	
8	37626	RODRIGUEZ,GLORIA	1	3 Key	20	SC	
9	131188	IACONO,JOHN	1	3 Key	20	SC	
10	39552	BLACK,STEVEN	1	3 Key	32	104	
11	132468	GONZALEZ, YOLANDA	1	3 Key	40	403	
12	133020	AGNEW, MICHAEL	1	3 Key	51	SAT/SUN	
13	35852	DAVIS,NANCY	1	3 Key	65	SAT/SUN	
14	132445	GUTIERREZ, PATRICIA	1	3 Key	72	602	
15	37452	FERRANDINO,PEARL	1	3 Key	80	407	
16	39376	POPE,KENTON	1	3 Key	80	SAT	
17	40859	GASPEROV,JOE	1	3 Key	86	FLOP	
18	132780	GARCIA, MAGDALENA	1	3 Key	88	SAT/SUN	
19	39469	GRAVITTE, JAMES	1	3 Key	88	601	
20	132312	CHAVEZ, ANGELICA	1	3 Key	88	S/S	
21	39128	MARQUEZ,ANTHONY	1	3 Key	90	SAT	
22	37788	HAMILTON, PAUL	1	3 Key	94	SAT/SUN	
23	132813	ZULIANI, JANELL	1	3 Key	95	S/S	
24	133801	SOLOMON, RODNEY	1	3 Key	99	S/S/M	
25	36567	MOLINA JR.,ALONZO	1	3 Key	100	SAT/SUN	
26	39028	PAGNI,ROBERT	1	3 Key	100	408	
27	131442	VENSON,FERNARD	1	3 Key	100	S/S	
28	37544	CARBONE,JO ANN	1	3 Key	100	S/S/M	
29	37408	HODGE,LINDA	1	3 Key	100	SC	
30	37422	WARGO,ROBERT	1	3 Key	106	S/S/M	
31	132600	VUKOVICH,SRDJAN	1	3 Key	107	SAT/SUN	
32	38591	FERNANDEZ,ROBERT	1	3 Key	108	SAT	
33	132248	JONES, LISA	1	3 Key	110	SAT/SUN	
34	36415	SMITH,RONDA	1	3 Key	110	604	
35	132273	JOHNSON, SHIRLEY	1	3 Key	110	S/S	
36	39200	HIRTZEL,MICHAEL	1	3 Key	112	S/S	
37	132832	FALKENSTEIN,JOHN	1	3 Key	114	SAT/SUN	

SC

Key

38	36541	BACA,ANTHONY	1	3 Key	114	SAT/SUN	
39	37395	DE MARTINO,LISA	1	3 Key	114	S/S	
40	38070	DAVIS,TENESAH	1	3 Key	114	S/S	
41	130739	MCKENNA,VANESSA	1	3 Key	118	S/S	
42	38292	HEREDIA,JASON	1	3 Key	120	SAT/SUN	
43	39350	GUTIERREZ,ANTHONY	1	3 Key	120	S/S	
44	37407	ONSTOTT,DOROTHEA	1	3 Key	121	408	
45	39445	TREVINO, SANDRA	1	3 Key	121	SAT/SUN	
46	38206	THORSON, RACHEL	1	3 Key	122	S/S	
47	130553	BOHANON,SHELLE	1	3 Key	124	SAT/SUN	
48	38088	GLASS,BRIDGETTE	1	3 Key	124	SAT/SUN	
49	37010	CENTER,BARBARA	1	3 Key	126	SAT	
50	130510	ANGELES,VERONICA	1	3 Key	127	253	
51	36698	HEREDIA,ADRIAN	1	3 Key	131	SAT/SUN	
52	133555	YBARRA, TINA	1	3 Key	131	401	
53	36383	UPSHAW,TAMMI	1	3 Key	132	SAT	
54	37570	DIBERNARDO,SHARON	1	3 Key	132	SAT/SUN	
55	132761	VALDES,DENI	1	3 Key	132	SAT/SUN	
56	39494	RODRIGUEZ,CHRISTIAN	1	3 Key	132	208	
57	38808	ANTHONY,ROCHELLE	1	3 Key	132	S/S	
58	131870	TRUJILLO,ROBERT	1	3 Key	132	S/S	
59	39696	MANDAC,NARCISO	1	3 Key	132	S/S	
60	130074	THIEDEMAN,BRIAN	1	3 Key	132	SAT	
61	131180	CHAVEZ-FEIPPEL,DIANA	1	3 Key	132	603	
62	39782	MOSES,MARCELLE	1	3 Key	132	S/S	
63	39075	VALADEZ,GARY	1	3 Key	132	S/S	
64	39390	VAUGHN,MARLON	1	3 Key	133	SAT/SUN	
65	38365	ANDREWS,DARRYL	1	3 Key	133	SAT	
66	37902	HARRIS, DWIGHT	1	3 Key	134	SAT/SUN	
67	39987	GIPSON, RONNIE	1	3 Key	135	401	
68	133102	MINGO, CORNELL	1	3 Key	136	VAC	
69	132047	MURRAY,JANINE	1	3 Key	138	247	
70	133077	VILLA, LUCIA	1	3 Key	140	SAT	
71	35369	BARK,DENNIS	1	3 Key	141	402	
72	37161	CRUZ,JOE	1	3 Key	141	227	
73	131950	HERRERA,MANUEL	1	3 Key	142	409	
74	131028	PONCE,MICHELLE	1	3 Key	142	409	
75	38822	SANCIRARDI,VITO	1	3 Key	143	SAT/SUN	
76	37844	MENDOZA,GUADALUPE	1	3 Key	143	SAT	
77	38189	SANCHEZ, JULIO	1	3 Key	143	406	
78	38704	DELGADO,KRISTY	1	3 Key	144	SAT/SUN	
79	133072	MATTERA, PALMA	1	3 Key	144	247	
80	39262	PRANIN,ROBERT	1	3 Key	144	S/S	
81	36622	HERRERA,KEVIN	1	3 Key	146	S/S	
82	130295	LOPEZ,EDGAR	1	3 Key	147	SAT/SUN	
83	39724	MANAI, ISAAKO	1	3 Key	147	S/S	
84	39157	ZAKS, VALERIE	1	3 Key	147	S/S	
85	132540	SCHMIDT, MONICA	1	3 Key	149	247	
86	39760	D'AMBROSI, PHILIP	1	3 Key	150	SAT/SUN	
87	39399	VAZQUEZ, SERGIO	1	3 Key	150	S/S/M	
88	133965	STAPLETON, BRIAN	1	3 Key	151	SAT/SUN	
89	132342	AGUILAR, ANNA	1	3 Key	151	S/S	
90	132480	TENNISON, CHELL	1	3 Key	152	227	
91	37558	BELL,CHINO	1	3 Key	152	247	
92	39279	BARBER,RONNIE	1	3 Key	153	S/S	

Key

93	133426	SMITH, JUSTIN	1	3 Key	153	S/S
94	38190	PISANO, CHRIS	1	3 Key	154	SAT/SUN
95	38022	DAWSON, GARY	1	3 Key	154	SAT/SUN
96	131692	HEATH-GALTMAN, TERRI	1	3 Key	154	605
97	39695	ALLEN, CHARLES	1	3 Key	154	S/S
98	36654	VERA, ANITA	1	3 Key	154	234
99	36607	IBARRA, ELIZABETH	1	3 Key	155	SAT/SUN
100	131269	OLIVARES, CLAUDIA	1	3 Key	156	SAT
101	37212	GALLOWAY, VELMA	1	3 Key	159	SAT/SUN
102	39519	TAUSAGA, REBEKA	1	3 Key	161	S/S
103	37301	WALTON, MARILYN	1	3 Key	162	405
104	37540	PONCE, ROSALIE	1	3 Key	164	214
105	39770	MARICIC, ANTHONY	1	3 Key	164	401
106	39286	PUCCIO, ANTHONY	1	3 Key	165	406
107	38489	POASA, FOISAGA	1	3 Key	165	SAT
108	38391	LIGGINS, JOE	1	3 Key	166	SAT
109	133421	GONZALEZ, RICHARD	1	3 Key	168	SAT
110	39802	STANOJEVICH, LAURIE	1	3 Key	168	SAT/SUN
111	38587	KEON, JOHN	1	3 Key	168	214
112	38677	BRADLEY SOTO, JANIS	1	3 Key	176	SAT
113	38521	LINARES, STEVEN	1	3 Key	177	605
114	131821	SCHMIDT, APRIL	1	3 Key	178	234
115	130633	WISNIEWSKI, MARK	1	3 Key	186	SAT
116	38734	FRIEL, MICHELLE	1	3 Key	187	SAT
117	132667	MILLER, GLENN	1	3 Key	192	252
118	38073	RUSHING, SAM	1	3 Key	197	407
119	39488	CONDE, SILVIA	1	3 Key	210	S/S
120	37438	GALVAN, SALOMON	1	3 Key	211	102
1	36820	LAPOV, JOSEPH	1	4 Basic	70	SAT
2	39258	AROSTIGUE, JASON	1	4 Basic	92	SAT/SUN
3	134097	MARQUEZ, DANIEL	1	4 Basic	96	SAT
4	38920	HERMAN, PATRICK	1	4 Basic	99	SAT/SUN
5	39144	BRUNAC, TODD	1	4 Basic	100	SAT
6	39491	NADER, ELBA	1	4 Basic	110	SAT/SUN
7	130227	LUJAN, JOSE	1	4 Basic	110	SAT
8	37333	LANDAVAZO, AMY	1	4 Basic	110	S/S
9	37895	WHITAKER, DUQUESNE	1	4 Basic	115	S/S
10	130451	QUIROS, MONICA	1	4 Basic	120	S/S
11	130750	VARGAS, STEVE	1	4 Basic	120	S/S
12	130627	TUANIGA, EPERU	1	4 Basic	120	103
13	130423	DILEVA, ANTHONY	1	4 Basic	124	SAT/SUN
14	39978	TOSCANO, CAROLYN	1	4 Basic	124	S/S
15	39531	ZAKS, ISRAEL	1	4 Basic	125	FLOP
16	39558	LUJAN, ARTHUR	1	4 Basic	127	S/S
17	131677	WATSON, CEDRIC	1	4 Basic	127	S/S
18	36759	CHACON, MARIE	1	4 Basic	128	S/S
19	39769	JOHNSON, YUTOPHIA	1	4 Basic	130	SAT
20	39217	GOMEZ, GUADALUPE	1	4 Basic	131	S/S
21	39019	HALL-CEASER, MELODY	1	4 Basic	131	SAT/SUN
22	36299	MENDOZA, FRANK	1	4 Basic	132	S/S/M
23	39370	HARRISON, PATRICK	1	4 Basic	132	S/S
24	131599	DILEVA, VINCENT	1	4 Basic	133	SAT/SUN
25	132629	LUA, DENISE	1	4 Basic	134	SAT
26	37546	VARGAS YONAN, MICHELLE	1	4 Basic	139	S/S
27	37042	GARCIA, MONICA	1	4 Basic	141	SAT/SUN

Key

Basic

28	39648	KUCELIN, NICHOLAS	1	4 Basic	143	S/S/M	
29	39832	GONZALEZ, MANUEL	1	4 Basic	143	S/S/M	
30	131371	TEJADA, ALICIA	1	4 Basic	150	S/S	
31	38836	QUIHUIZ, ERNESTO	1	4 Basic	153	401	
32	133360	DORMAN, DAWN	1	4 Basic	160	SAT	
33	131826	LOGRANDE, TOMMY	1	4 Basic	160	S/S	
34	36942	TUCK, CHAD	1	4 Basic	162	SAT	
35	39359	LOPEZ, JULIO	1	4 Basic	163	SAT/SUN	
36	37401	MEANS, ROBERT	1	4 Basic	163	105	
37	39884	HERRERA, STEFANIE	1	4 Basic	164	SAT	
38	38981	DAVIDSON, DAVID	1	4 Basic	170	SAT	
39	130051	KURODA, SCOTT	1	4 Basic	170	S/S	
40	39586	FRANK, GEORGE	1	4 Basic	176	SAT/SUN	
41	130982	LOPEZ, JAY	1	4 Basic	186	SAT	
42	39533	GONZALES, MICHAEL	1	4 Basic	204	S/S/M	
43	130225	CHAN, KENNETH	1	4 Basic	220	407	
44	39042	ZAPATA, S	1	4 Basic	255	407	1
45	39524	PROPST, CHRISTOPHER	1	4 Basic	279	401	
46	37798	BILLINGS, JOE	1	4 Basic	292	FLOP	
1	37826	YBARRA, LOUIS	1	6 SC STDY	94	SAT	
2	37265	PECARICH, NICK	1	6 SC STDY	167	SAT	
1	131812	SOTO, ADELE	1	7 Key STDY	119	SAT	
2	130922	FOUNTAIN, BEVERLY	1	7 Key STDY	120	FLOP	
3	37826	YBARRA, LOUIS	1	7 Key STDY	124	SAT	
4	131738	PADILLA, ROBERT	1	7 Key STDY	139	401	
5	130324	PATALANO, JOSEPH	1	7 Key STDY	143	SAT	
6	37825	FLORES, LILLIAN	1	7 Key STDY	152	401	
7	38817	D'AMBRA, ANTHONY	1	7 Key STDY	152	SAT	
8	37734	WYMORE, WILLIAM	1	7 Key STDY	164	SAT	
9	37265	PECARICH, NICK	1	7 Key STDY	167	SAT	
10	35238	MCCLANAHAN, KATHY	1	7 Key STDY	168	SAT	
11	132847	SMITH, JEFF	1	7 Key STDY	168	404	
12	132359	GAMBOA JR., FERNANDO	1	7 Key STDY	169	FLOP	
13	39699	INFANTE, JASON	1	7 Key STDY	169	FLOP	
14	130570	MELGOSA, FRANCISCO	1	7 Key STDY	178	SAT	
15	36503	FURRIEL, VICTOR	1	7 Key STDY	178	401	
16	38317	GUARDADO, KENNETH	1	7 Key STDY	184	401	
17	39485	SCOGNAMILLO, ROBERT	1	7 Key STDY	200	407	
18	39464	SANCHEZ, GEORGINA	1	7 Key STDY	221	SAT	
19	131580	CRUZ, CESAR	1	7 Key STDY	228	401	
20	39823	ARMOND, SOLOMAN	1	7 Key STDY	305	FLOP	

Basic

Study